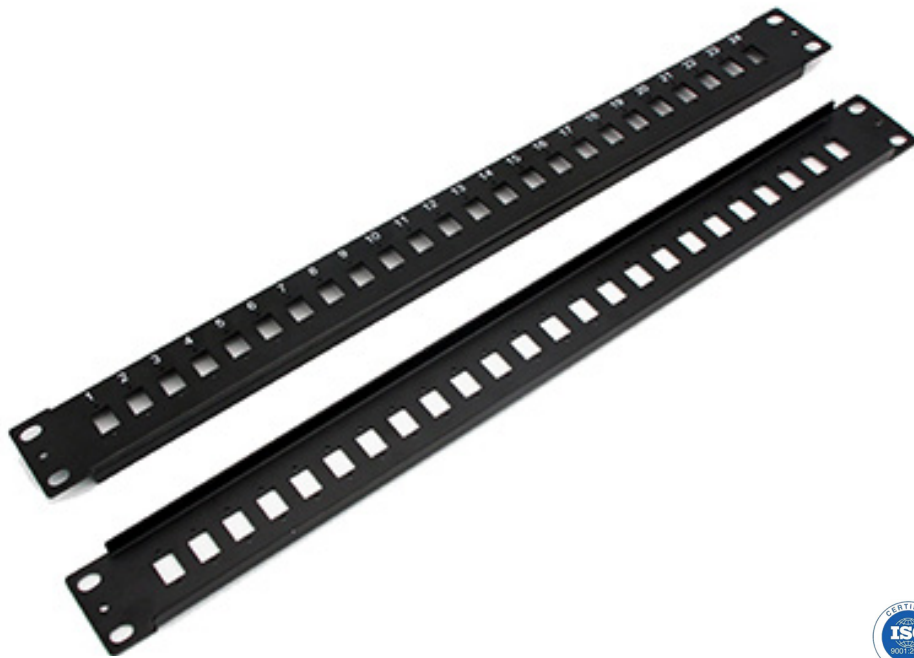


DATASHEET

19' 1RU Adapter Panel frame-Integrated design

Designed for 19' Fiber Frame Management System



OMC INDUSTRY CO.LIMITED

2018|En version1.0

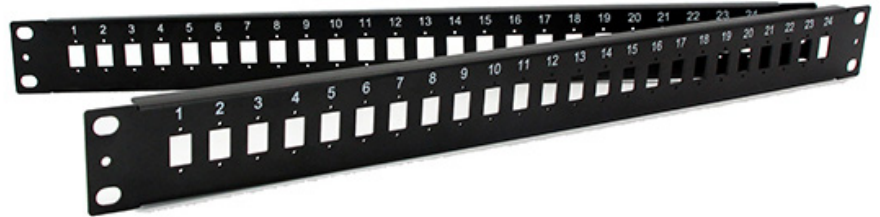


19' 1RU Adapter Panel frame-Integrated design

Products Description

High quality steel adapter panel is suitable for 1U 19" frame rack mount or cabinet, designed for backbone-to-backbone and backbone-to-horizontal fiber cabling. Fiber patch panels are the bridge of fiber patch cables, serving as standard 1U 19" rack, ODF and cabinets, to create a complete system for connectivity. It can be applied in LANs housing, optical communication, FTTH, and data center cabling etc

Products Details

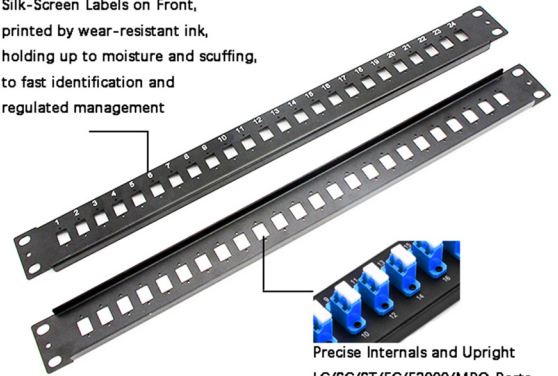


Part No.	P11xxx	No. of Adapter Port	6/8/12/16/24/32 ports.....
Fiber Count	6/8/12/16/24/48/64/ 72/96/144F	Adapter Type	LC Duplex, LC Quad, SC Simplex, SC Duplex, FC Simplex, MT-RJ, ST Simplex, E2000 Simplex MPO/MPO adapters
Material	1.5mm CRS Cold rolled steel	Dimensions (WxL)	482.6mm x44mmx10mm
RoHS Compliancy Status	Compliant	Application	Mount In a 19" Network Rack Panel

Features:

- Stronger platform with 1.5mm SPCC, to install customs array of adapters
- Evenly-distributed openings to suitable space for patching
- Fully loaded with fiber couplers to save much cost
- Small Device to High-Effective Management- 48 Fibers 1U 19" Fiber Patch Panel
- Easy to install for better deployment and expand your network for interconnection and cross-connection inside the rack mount and cabinet

Silk-Screen Labels on Front, printed by wear-resistant ink, holding up to moisture and scuffing, to fast identification and regulated management



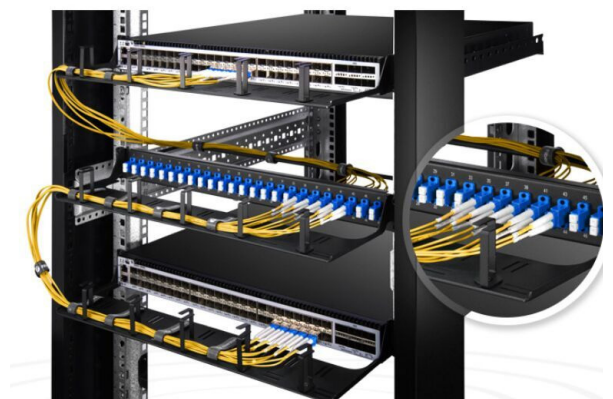
Precise Internals and Upright LC/SC/ST/FC/E2000/MPO Ports

Package

Fiber adapter patch panel with rectangle paper box can resist high crush and keep friendly environment, Customized label is available on request



Application



Order Index

Structure	-	Height	-	Adapter Port	-	Port Qty	-	Color
P1-Integrated Design		1-1U		1-LC Duplex		0-OEM		1-Black
		2-1U		2-LC Quad		1- 6 ports		2-Grey
				3-SC Simplex		2- 8 ports		
				4-SC Duplex		3- 12ports		
				5-FC Square type		4- 16 ports		
				6-FC D hole type		5- 24 ports		
				7- ST Simplex		6- 32 ports		
				8-E2000 Simplex		7- 48 ports		
				9-MT-RJ				
				0-MPO/MTP				