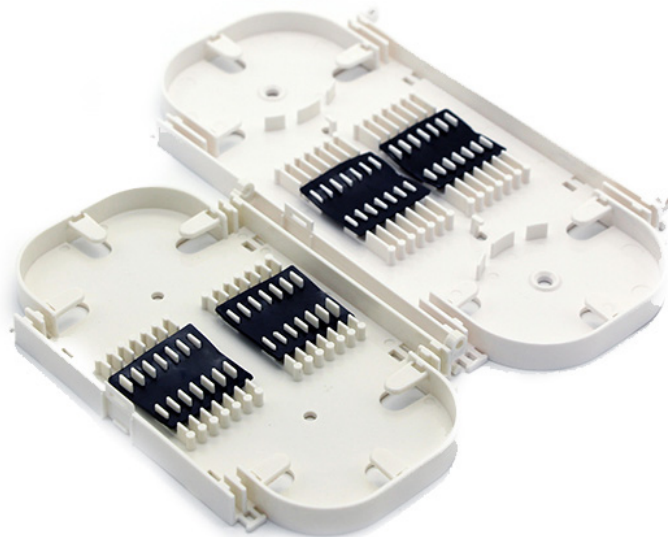


DATASHEET

# Fiber Splice Tray

---



RoHS

---



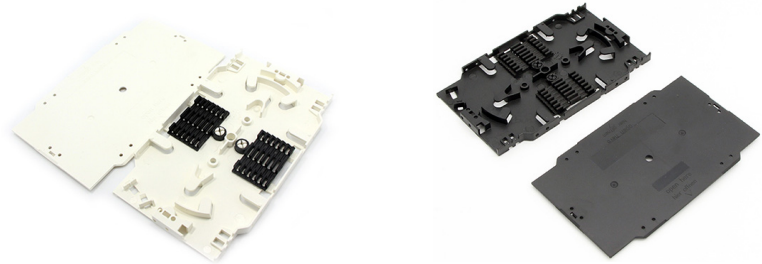
OMC INDUSTRY CO.LIMITED

**Products Profit:**

Fiber optic splice trays are designed to fiber management provide a location to store and to protect the fiber cables and the splices. Each tray provides space for mounting fiber splice protectors and excess fiber. It's divided into common splice tray, module integration and splitter tray.

Optical fiber inside the fiber tray can be melt with any other strand optical fiber in the tray, thus different fiber optic cables can be melt connected directly via the tray. Optical cable fiber can also be melted with the fiber optic pigtail end, and via pigtail it can connect out to other fiber optic equipment.

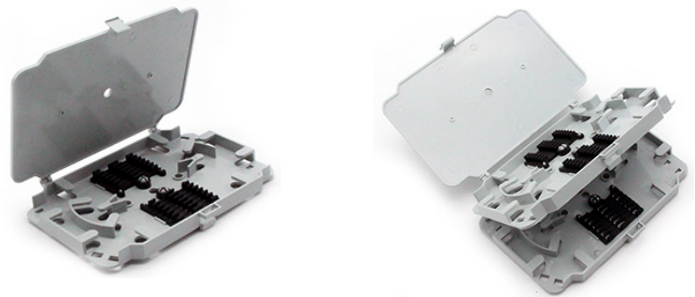
**Fiber Splice tray:FSP-12A**



**Configuration**

Part NO	Dimension(mm)	Splice capacity	Material	Stackable	Color
FSP-12A-1	154 x 92 x 10	12	ABS	NO	White
FSP-12A-2	154 x 92 x 10	12	ABS	NO	Black

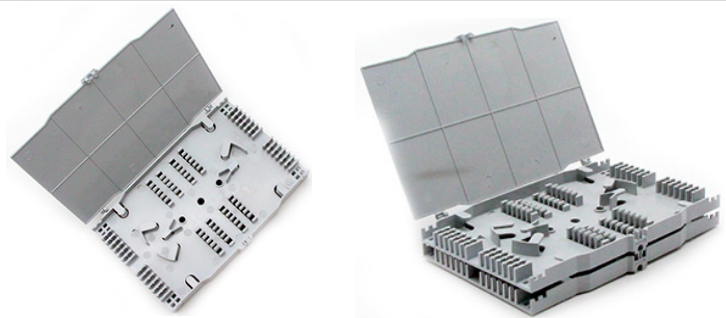
**Fiber Splice tray:FSP-12B**



**Configuration**

Part NO	Dimension(mm)	Splice capacity	Material	Stackable	Color
FSP-12B	140 x 90 x 10	12	ABS	Yes	Grey

**Fiber Splice tray:FSP-12C**



**Configuration**

Part NO	Dimension(mm)	Splice capacity	Material	Stackable	Color
FSP-12C	157x105x11	12	ABS	Yes	Grey

**Products Profit:**

Fiber optic splice trays are designed to fiber management provide a location to store and to protect the fiber cables and the splices. Each tray provides space for mounting fiber splice protectors and excess fiber. It's divided into common splice tray, module integration and splitter tray.

Optical fiber inside the fiber tray can be melt with any other strand optical fiber in the tray, thus different fiber optic cables can be melt connected directly via the tray. Optical cable fiber can also be melted with the fiber optic pigtail end, and via pigtail it can connect out to other fiber optic equipment.

**Fiber Splice tray:FSP-24A**



**Configuration**

Part NO	Dimension(mm)	Splice capacity	Material	Stackable	Color
FSP-24A-1	223 x 107 x 16	24	ABS	YES	White
FSP-24A-2	223 x 107 x 16	24	ABS	YES	Grey

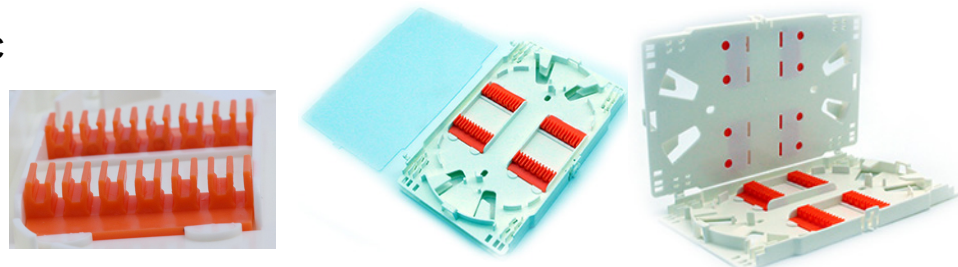
**Fiber Splice tray:FSP-24B**



**Configuration**

Part NO	Dimension(mm)	Splice capacity	Material	Stackable	Color
FSP-24B-1	175 x 109 x 19	24	ABS	YES	White
FSP-24B-2	225 x 116 x 19	24	ABS	YES	White

**Fiber Splice tray:FSP-24C**



**Configuration**

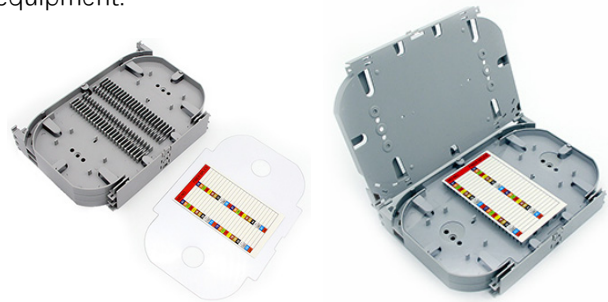
Part NO	Dimension(mm)	Splice capacity	Material	Stackable	Color
FSP-24C	180x110x10	12	ABS	Yes	White

**Products Profit:**

Fiber optic splice trays are designed to fiber management provide a location to store and to protect the fiber cables and the splices. Each tray provides space for mounting fiber splice protectors and excess fiber. It's divided into common splice tray, module integration and splitter tray.

Optical fiber inside the fiber tray can be melt with any other strand optical fiber in the tray, thus different fiber optic cables can be melt connected directly via the tray. Optical cable fiber can also be melted with the fiber optic pigtail end, and via pigtail it can connect out to other fiber optic equipment.

**Fiber Splice tray:FSP-48A**



**Configuration**

Part NO	Dimension(mm)	Splice capacity	Material	Stackable	Color
FSP-48A-1	223 x 155 x 14	48	ABS	YES	White
FSP-48A-2	223 x 155 x 14	24	ABS	YES	Grey

**Fiber Splice tray:FSP-48B**



**Configuration**

Part NO	Dimension(mm)	Splice capacity	Material	Stackable	Color
FSP-48B	220 x 89 x 16	24	ABS	YES	Light Yellow